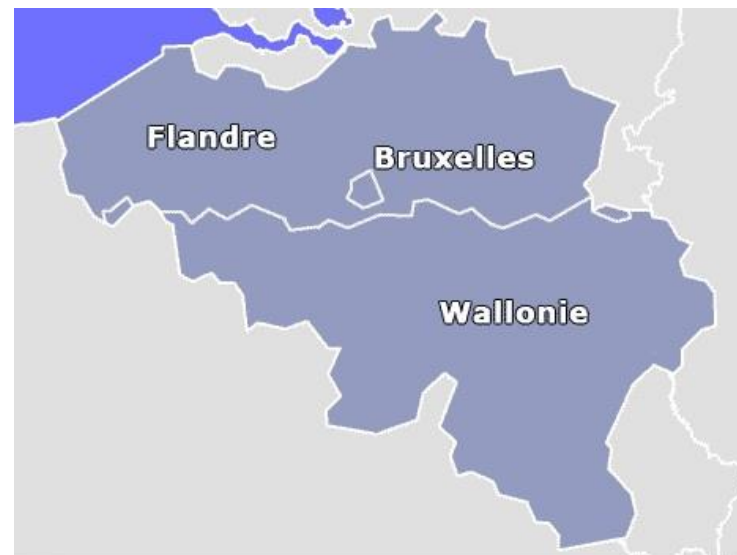


POLLUTED SITES LEGAL FRAMEWORK & TOOLS in Wallonia/BELGIUM

*Inauguration & Innovation Day J
HAEMERS Technologies Brussels
March 9th 2017*



Jamila LAHMAR - attachée
Soil and Waste Department- Soil Remediation management
Jamila.lahmar@spw.wallonie.be



DIRECTION GÉNÉRALE OPÉRATIONNELLE
DE L'AGRICULTURE, DES RESSOURCES NATURELLES ET DE L'ENVIRONNEMENT

Outline

- 1. Context - clip DGO3**
- 2. Legal framework/tools & objectives**
 - 1. Conservation of natural resources/ to manage the impacts of human activity**
 - 2. Procedures & Definitions – Help citizens**
 - 3. Information**
- 3. Questions/answers**



2. Legal framework and tools : goals - Conservation of natural resources

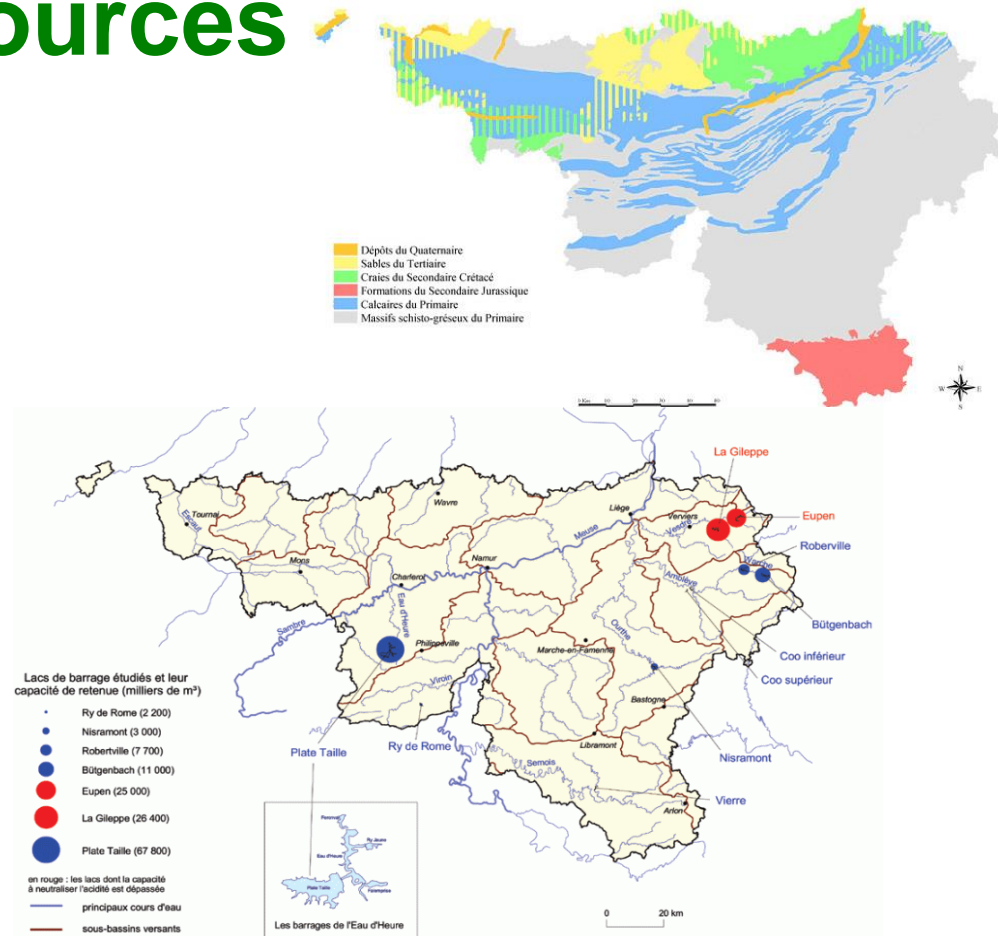
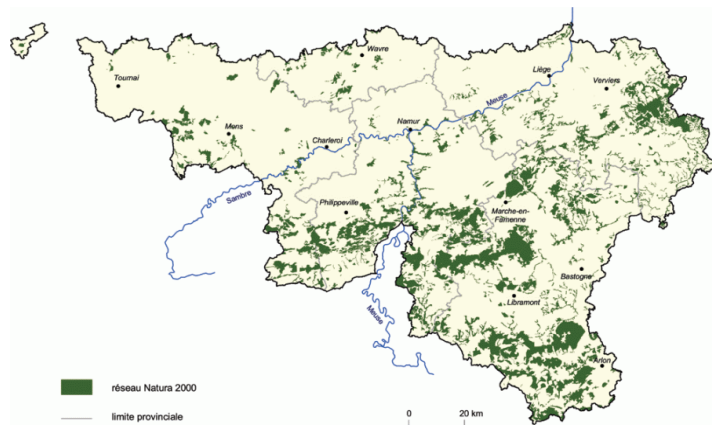
- Soil Decree (2008)
 1. To conserve the resources
 2. To manage the impacts of the industrial activity
- Walloon code of good practices (2013)
 1. Method & Content (studies)
 2. How to manage the soil polluted files



Soil Decree (2008)

2.1 conservation of natural resources

- Groundwater resources
- Hydrographic network
- Natura 2000 network



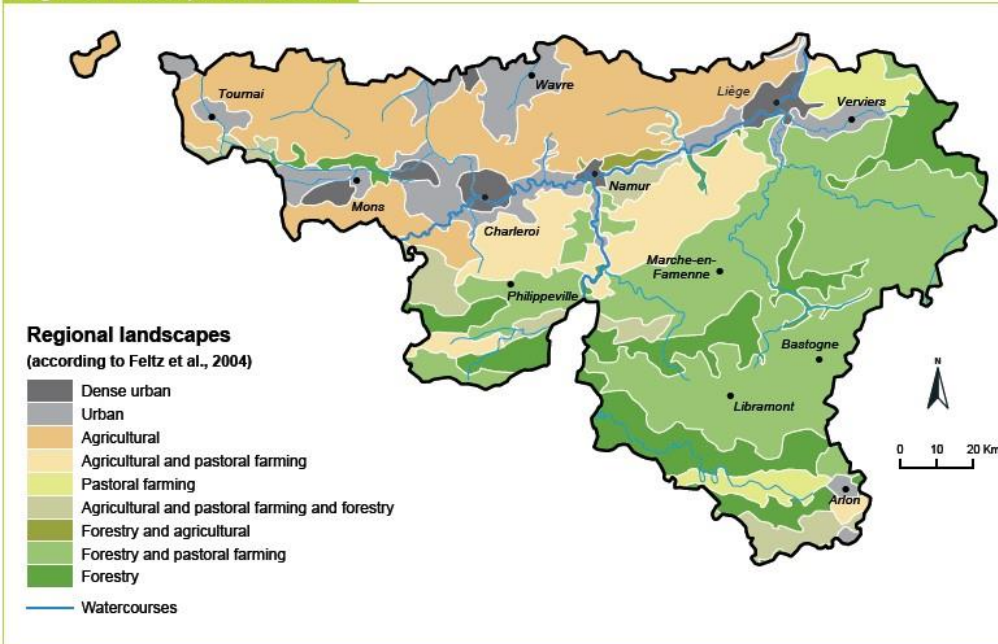
Soil Decree (2008)

2.1 To manage the impacts of industrial activities



Landscapes and human activity

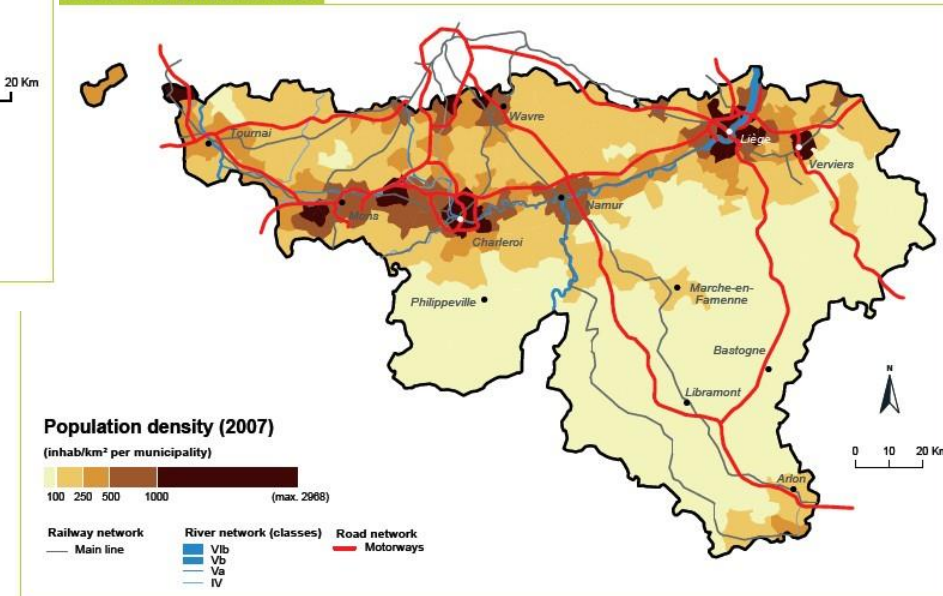
Regional landscapes of Wallonia



EOW 2008 – Source : CPDT (produced by CEEW)

Human activities and industries've mainly been developped along the waterway networks and the richness of the subsoil (Sambre-and-Meuse riverline)

Population and infrastructures



EOW 2008 – Sources : SPF ; SPW - DGO1 ; SNCB (produced by CEEW)



DIRECTION GÉNÉRALE OPÉRATIONNELLE
DE L'AGRICULTURE, DES RESSOURCES NATURELLES ET DE L'ENVIRONNEMENT

Long history of industrial activity



Angleur - 1855 (from CHST)

- XVIIIth : coal and metal (iron) mining
- XIXth : 2nd industrial world power

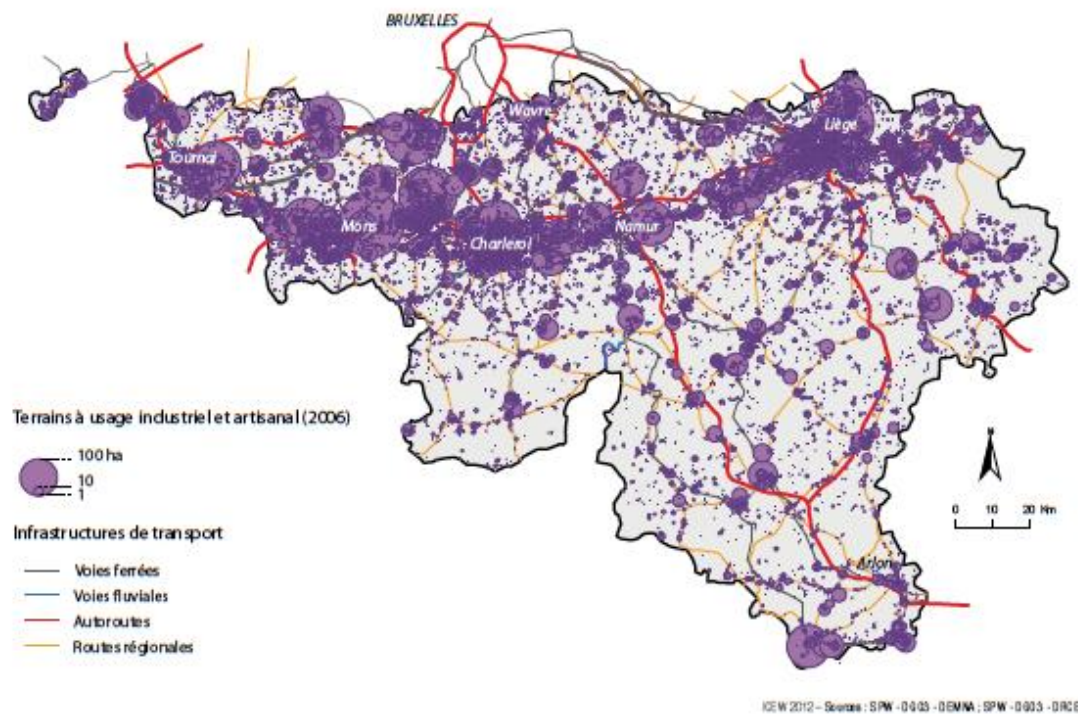


Seraing - 1926 (from AIDE)



Potential contaminated sites

TERRAINS OCCUPÉS PAR UN USAGE INDUSTRIEL OU ARTISANAL



The number of potential contaminated sites in Wallonia is between 4.497 (inventory) (11 542 ha) & 17.000

A testimony to Wallonia's industrial past.

2.2 Procedures & Definitions



Soil Protection

preventing soil pollution and other degradation : erosion, reduction of organic matter,....

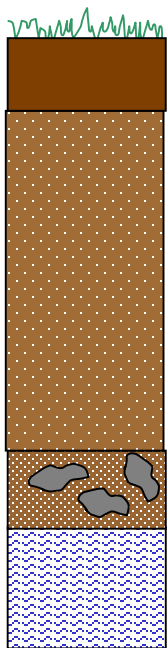


Soil Remediation

Identifying potential sources of pollution
organizing investigations to establish the existence of pollution and to quantify
determining the right soil remediation scheme



2.2 Procedures Definitions



***SOIL* = Superficial layer of earth crust including groundwater and other present elements and organisms**



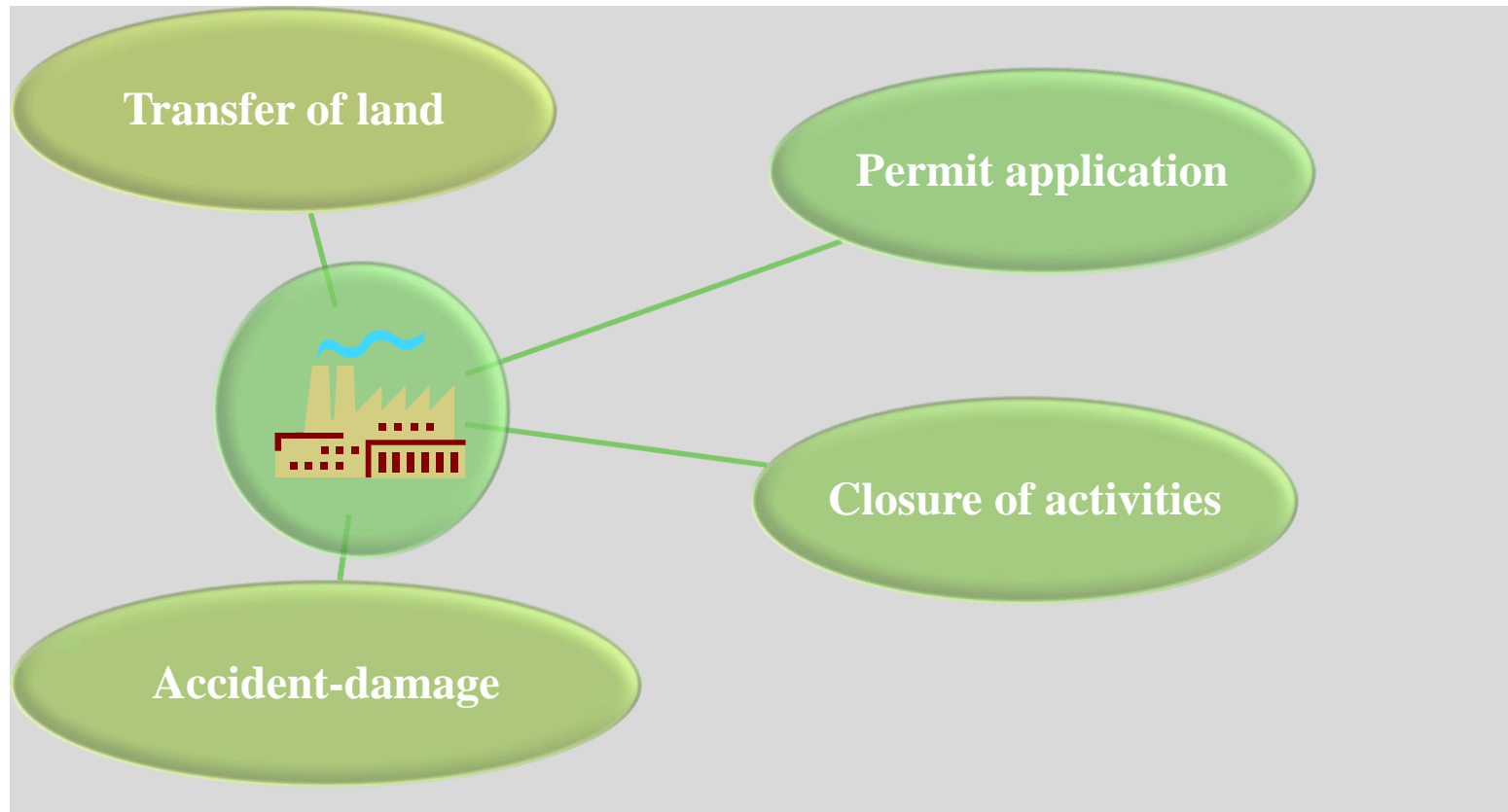
2.2 Procedures & Definitions

- *The norms* (Annex I) based on risk assessment
- *The field use* (Annex II (type of uses))
- *Pollution*: Exceeding the threshold value
- *New (after 30/4/2007) or historical pollution (before 30/4/2007)*
- *Potentially contaminated site /« field»*
Suspected pollution due to activities or accidents (Annex III listing activities and installation likely polluting soils (231) : *Coal mining, dry cleaning, gas station*



2.2 Procedures & Definitions

OBLIGATION FOR SOIL STUDY IN THE CASE OF RISK ACTIVITIES



2.2 Procedures & Definitions : Remediation several stages

ORIENTATION STUDY

preliminary soil investigation – research the sources (historical study) and confirm the presence of pollution

CHARACTERISATION STUDY + (RISK EVALUATION)

determine as accurately as possible the type, the magnitude and the impacts of the pollution present in the soil/groundwater + is there a risk?

SOIL REMEDIATION PROJECT

restore the state of the soil to one that is compatible with its use.

SOIL REMEDIATION WORKS and FINAL REPORT

Soil
Control
Certificate



2.2 Procedures & Definitions : Obligation to clean up the soil /remediation objectives

- New : remediation must tend towards the reference values (depends on the pollutant)
- Historical : remediation if risk occurrence



Walloon code of good practices (since 2013)

2.1 Method & Content (studies)

- Reference Guide for the Orientation study
 - Dev : Method for Historical study of the site & report simplification
- Reference Guide for the Characterisation study :
 - Dev : Simplification of the method and the reporting
- Reference Guide for the Risk study : S- risk harmonization with the other Regions (Brussels and Flanders)
- Reference Guide for the Remediation Project : *Gama* (Batneec – sustainable remediation method)
- In progress (Premaz : specify guide for fuel oil tanks)



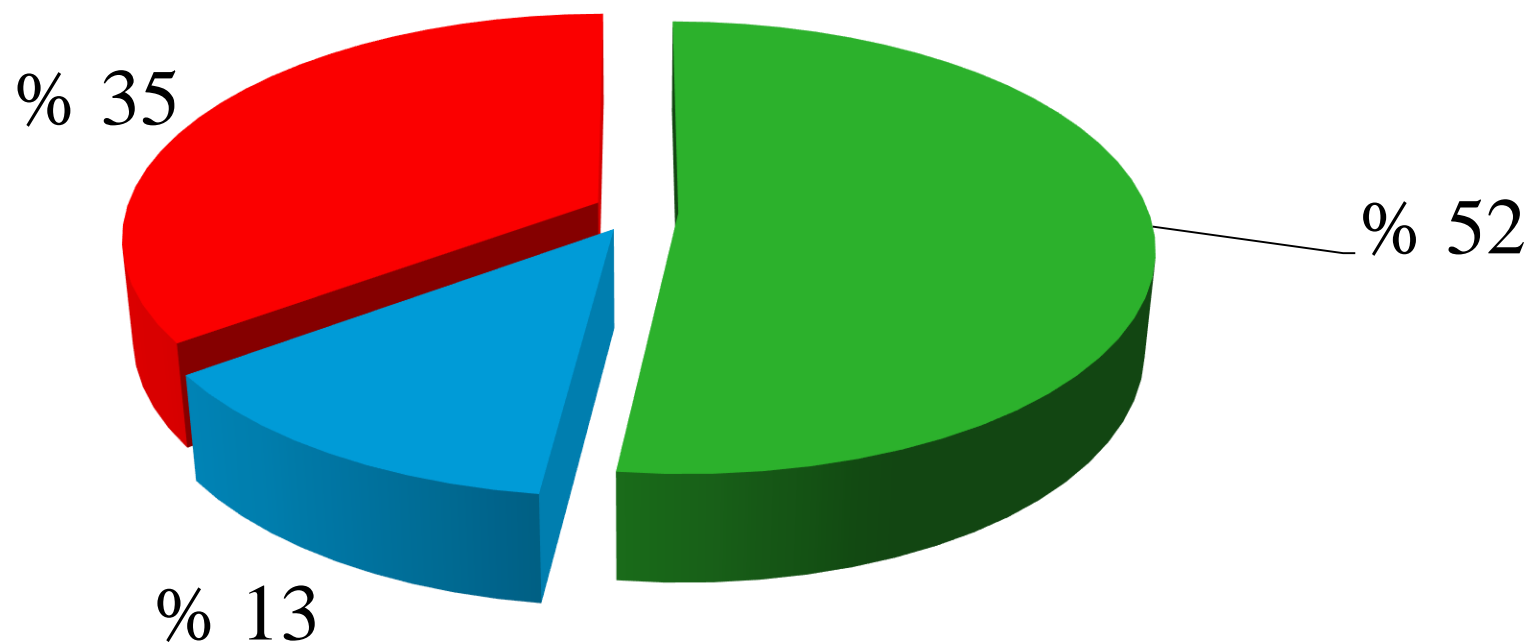
2.2 Studies instructions : HOW?



- **Checklist** for each stage of the process of soil remediation
- Based
 - on the report content as described in the Walloon Code of Good Practices +
 - Decretal requirements
- **Decisions**
 - *CONFORMITY : 52% (734 CCS)*
 - *NOT IN CONFORMITY : 13%*
 - *SUPPLEMENTS NECESSARY : 35 %*



DECISIONS - studies



■ Conformity ■ Non in conformity ■ Supplements

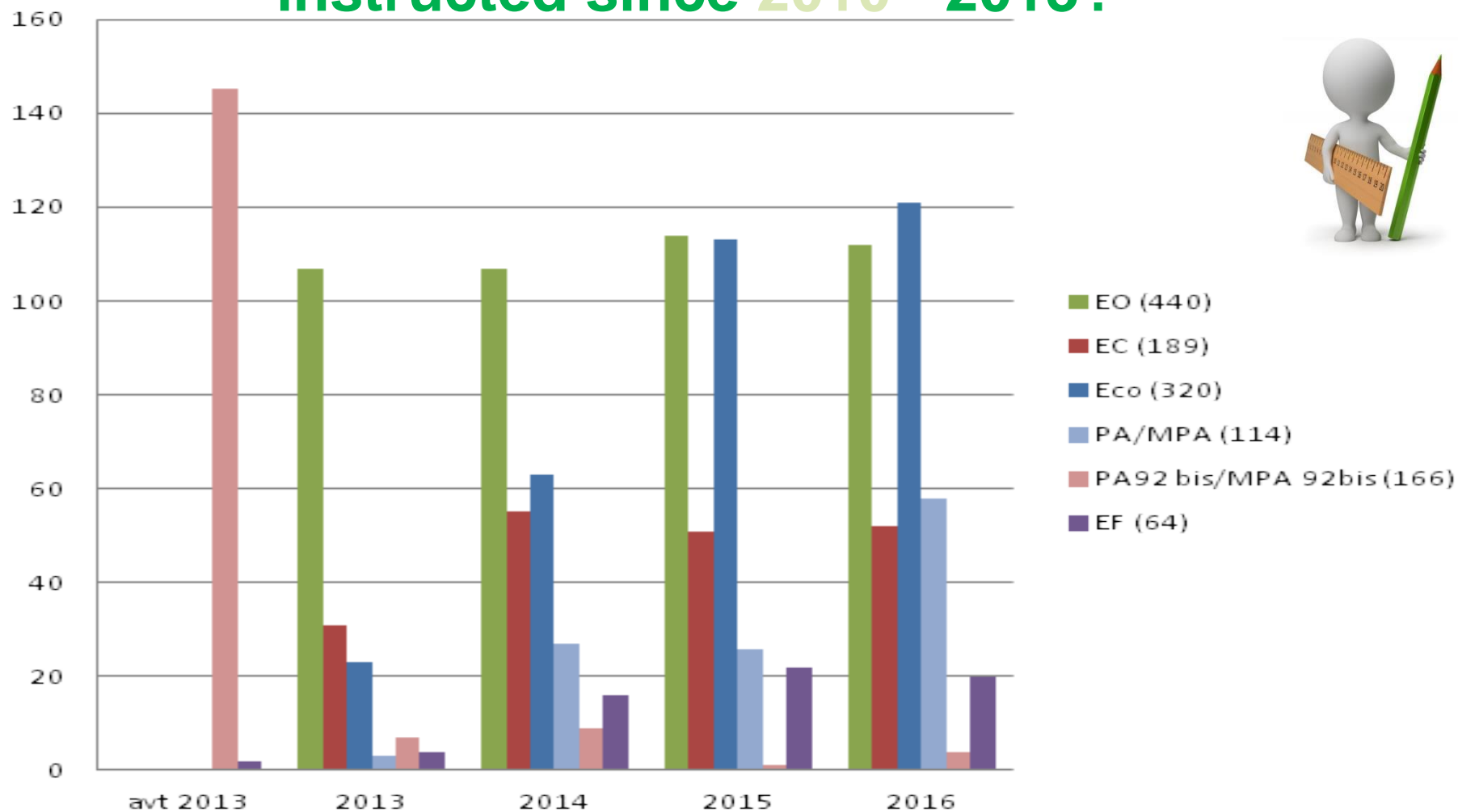


DIRECTION GÉNÉRALE OPÉRATIONNELLE
DE L'AGRICULTURE, DES RESSOURCES NATURELLES ET DE L'ENVIRONNEMENT



Service public de Wallonie

2.2 How many studies/projets have been instructed since 2010 - 2013?





Focus : Soil Control Certificate contents

- Cadastral land plot : « *parcelle cadastrale* »
- Identification of the holder/ his obligations
- Use of the field
- Status of the soil (clean up, residual pollution)
– which specific values? (*valeurs particulières*)
- Safety measures / follow-up
- A map

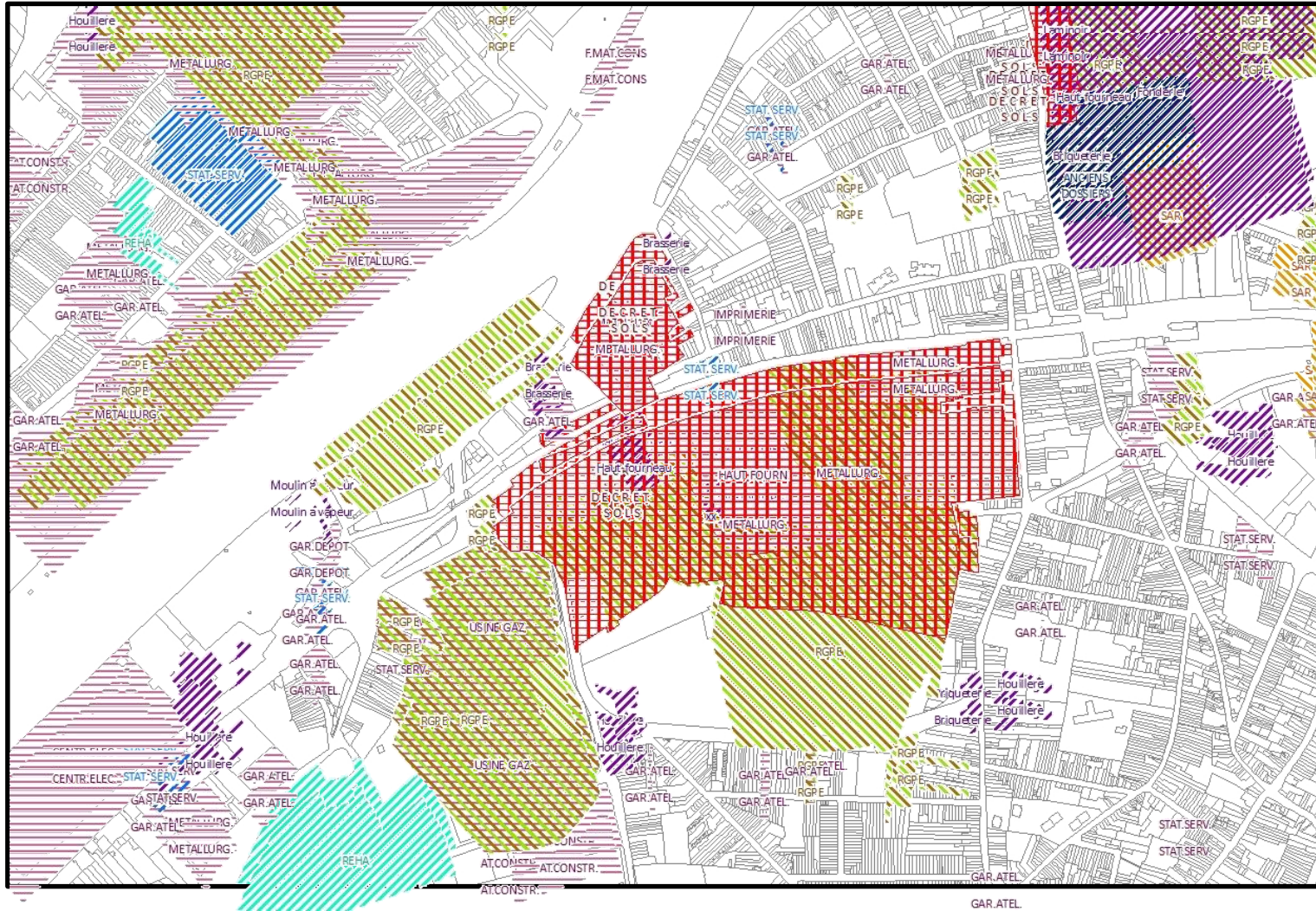


2.3 Information

- Soil status Database =« SSBD » (*BDES*) (= Inventory made of several registers)
- SSBD use : administration decision for permit delivery/stopping of activity / bankruptcy, trigger for soil investigations, information for sellers/buyers through notaries,...



3. Information : the Inventory



Soil Decree

~350

Gas stations

~2400

Réhabilitations

~1300

Old procedures

~700

Old Maps

~6000

Permits

~6000



Cadastral land status

~25000



Brownfields



DIRECTION GÉNÉRALE OPÉRATIONNELLE
DE L'AGRICULTURE, DES RESSOURCES NATURELLES ET DE L'ENVIRONNEMENT



Service public de Wallonie

3. Questions?

THANK YOU FOR YOUR ATTENTION

For more information :

<http://www.environnement.wallonie.be>

<http://www.dps.environnement.wallonie.be>

Jamila.lahmar@spw.wallonie.be

